

Shandong KMR Bearing S&T Co.,Ltd

No. 001 KMR Road, Tangyuan Town, Linqing,  
Liaocheng, Shandong province,China

Tel: +86 531 6669 5621; +86 635 2816 966

Email: [alice@sdkmr.com](mailto:alice@sdkmr.com); [yjx@sdkmr.com](mailto:yjx@sdkmr.com)

Web: [www.sdkmr.com](http://www.sdkmr.com)



KMR Bearing  
Insert bearing units  
UC range



Shandong KMR Bearing S&T Co.,Ltd

# Contents

- 1. Insert bearing units UC range.....2
  - KMR UC range.....2
  - KMR high-quality grease.....2
  - Sealing system.....2
  - Prefix of insert bearings.....2
  - Prefix of Housings.....2
- 2.Product tables .....2
  - 2.1 Insert bearings with set screws, metric shafts.....3
    - Insert bearings with set screws, inch shafts.....5
  - 2.2 Insert bearing pillow blockunits, set screws, for metric shafts.....7
    - Insert bearing pillow blockunits, set screws,for for inch shaft.....9
  - 2.3 Insert bearing flanged units with square 4-bolt flange housing, set screws,for metric shafts.....11
    - Insert bearing flanged units with square 4-bolt flange housing, set screws,for inch shaft.....13
  - 2.4 Insert bearing flanged unit with round 4-bolt flange housing, set screws,for metric shafts.....15
  - 2.5 Insert bearing flanged units with oval 2-bolt flange housing, set screws, for metric shaft.....17
  - 2.6 3-bolt bracket flanged ball bearing units, set screws, for metric shafts.....19
  - 2.7 Take-up ball bearing units, set crews, for metric shafts.....21
  - 2.8 Tapped base Plummer block ball bearing units, set screws for metric shafts.....23
  - 2.9 Insert bearings with set screws, metric shafts.....25
  - 2.10 Pillow block ball bearing units, adapter locking.....27
  - 2.11 Square flanged ball bearing units, adapter locking.....29
  - 2.12 Insert bearings with set screws, metric shafts.....31
  - 2.13 Pillow block ball bearing units, adapter locking.....33
  - 2.14 Square flanged ball bearing units, adapter locking.....35

## KMR UC range

KMR has developed the "UC series" ball bearing units. The insert bearings in this series units are modified based on single row deep groove ball bearings. The UC series insert bearings use fixing screws to quickly lock at any position on the shaft. They are equipped with various styles of bearing housings according to different applications. UC series insert bearings are widely used in transportation machinery, food machinery, agricultural machinery, engineering machinery, textile machinery, industrial fans, metal processing and other industries.

## KMR high-quality grease

Poor lubrication accounts for more than 30% of premature bearing failures. KMR UC series ball bearing units adopt an optimized grease scheme, which can effectively reduce the occurrence of poor lubrication.

## Sealing system

KMR UC series ball bearing units use an improved sealing scheme. The seals consist of a compressed steel plate gasket, and the sealing lip is made of nitrile rubber bonded to its inner surface. A coated non-contact steel plate gasket creates a narrow gap with the cylindrical surface of the inner ring to protect the seals from contaminants. KMR UC series ball bearing units have better sealing effect.

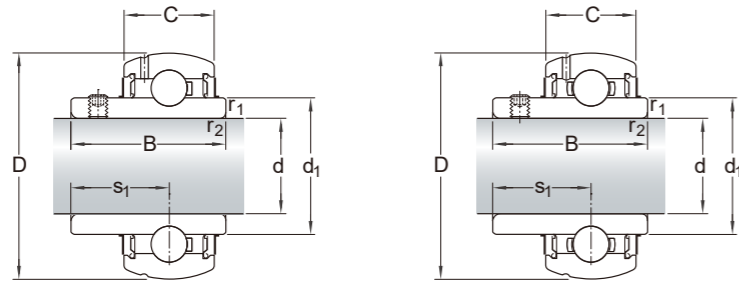
## Prefix of insert bearings

Designation	Product
UC	Insert bearings, cylindrical bore, with set screws
UK	Insert bearing with a tapered bore and adapter sleeve

## Prefix of Housings

Designation	Product
P	Pillow block unit
F	Flanged unit, square 4-bolt fmange
FL	Flanged unit, oval 2-bolt fmange
FC	Flanged unit, round 4-bolt fmange
T	Take-up unit for linear motion
FB	Flanged unit, 3-bolt fmange
PA	Tapped base pillow block unit

## 2.1 Insert bearings with set screws, metric shafts d 20 – 100 mm



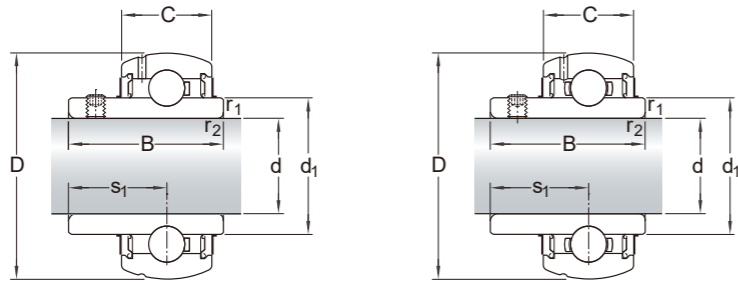
Polymer cage for size 204 to 210

Pressed steel cage for size 211 and above

Designation	Dimensions						
	d	D	B	C	d <sub>1</sub>	s <sub>1</sub>	r <sub>1,2 min.</sub>
	mm						
UC204	20	47	31	15	28.7	18.3	1
UC205	25	52	34	15	33.7	19.7	1
UC206	30	62	38.1	18	39.8	22.2	1
UC306	30	72	43	21	44.8	26	2
UC207	35	72	42.9	19	46.8	25.4	1.1
UC307	35	80	48	23	50.4	29	2.5
UC208	40	80	49.2	22	52.5	30.2	1.1
UC308	40	90	52	25	56.5	33	2.5
UC209	45	85	49.2	22	57.3	30.2	1.1
UC309	45	100	57	29	63	35	2.5
UC210	50	90	51.6	22	62.1	32.6	1.1
UC310	50	110	61	30	69.1	39	3
UC211	55	100	55.6	25	70	33.4	1.5
UC311	55	120	66	32	76.1	41	3
UC212	60	110	65.1	27	77	39.7	1.5
UC312	60	130	71	35	81.7	45	3.5
UC213	65	120	65.1	27	82.1	39.7	1.5
UC214	70	125	74.6	29	87	44.4	1.5
UC215	75	130	77.8	30	91.5	44.5	1.5
UC315	75	160	82	43	101.3	50	3.5
UC216	80	140	82.6	32	98.5	49.3	2
UC316	80	170	86	44	107.9	52	3.5
UC217	85	150	85.7	34	105	51.6	2
UC218	90	160	96	36	111.5	56.3	2
UC320	100	215	108	54	135.5	66	4.5

Designation	Basic load ratings		Fatigue load limit	Limiting speed with shaft tolerance h6	Mass
	dynamic	static			
	C	C <sub>0</sub>	P <sub>u</sub>	r/min	kg
-	kN		kN		
UC204	12.76	6.73	0.30	6600	0.15
UC205	14.07	7.84	0.30	5950	0.19
UC206	19.60	11.46	0.50	5100	0.3
UC306	26.63	15.08	0.64	5400	0.54
UC207	25.63	15.38	0.70	4400	0.46
UC307	33.37	19.40	0.82	4800	0.71
UC208	32.66	20.10	0.90	3850	0.61
UC308	41.21	24.12	1.03	4300	0.96
UC209	32.66	20.50	0.90	3500	0.67
UC309	52.96	32.16	1.35	3850	1.3
UC210	35.28	23.32	1.01	3400	0.74
UC310	62.11	38.19	1.61	3500	1.65
UC211	43.82	29.15	1.31	3100	1.07
UC311	71.86	45.23	1.91	3200	2.1
UC212	52.96	36.18	1.51	2800	1.5
UC312	82.31	52.26	2.21	3000	2.6
UC213	57.49	40.20	1.71	2450	1.81
UC214	62.71	44.22	1.91	2350	2.01
UC215	66.63	49.25	2.01	2200	2.2
UC315	114.57	76.88	3.02	2400	4.65
UC216	71.86	54.27	2.21	2000	2.79
UC316	124.62	86.93	3.27	2250	5.45
UC217	83.62	64.32	2.51	1900	3.38
UC218	96.08	72.36	2.71	1700	4.23
UC320	174.87	140.70	4.77	1800	10.9

## 2.1 Insert bearings with set screws, inch shafts d 3/4 – 4 in



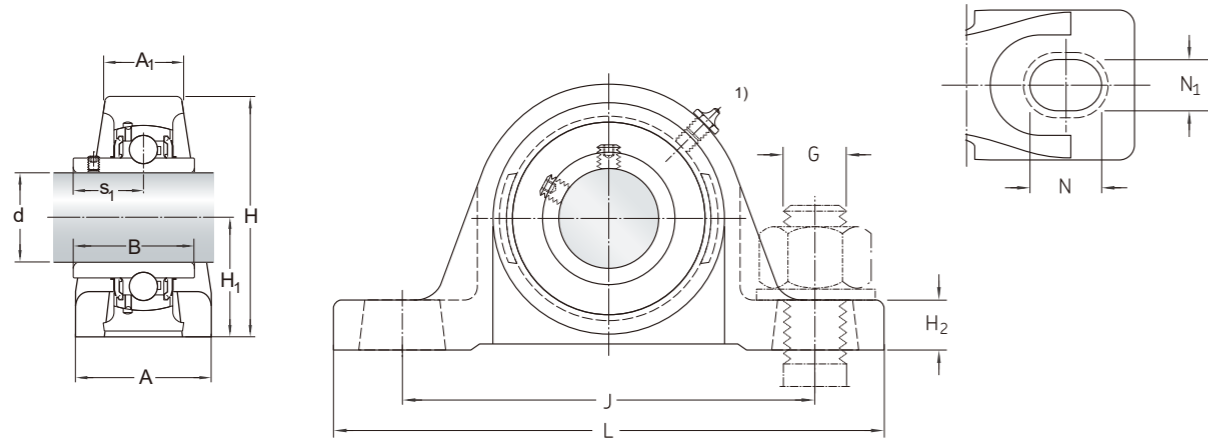
Polymer cage for size 204-12 to 209-28

Pressed steel cage for size 211-32 and above

Designation	Dimensions						
	d	D	B	C	d <sub>1</sub>	s <sub>1</sub>	r <sub>1,2 min.</sub>
	mm						
-	mm						
UC204-12	3/4	47	31	15	28.7	18.3	1
	19.05						
UC205-14	7/8	52	34	15	33.7	19.7	1
	22						
UC205-15	15/16	52	34	15	33.7	19.7	1
	24						
UC205-16	1	52	34	15	33.7	19.7	1
	25.4						
UC206-18	1 1/8	62	38.1	18	39.8	22.2	1
	29						
UC206-19	1 3/16	62	38.1	18	39.8	22.2	1
	30						
UC207-20	1 1/4	72	42.9	19	46.8	25.4	1.1
	31.75						
UC207-22	1 3/8	72	42.9	19	46.8	25.4	1.1
	35						
UC207-23	1 7/16	72	42.9	19	46.8	25.4	1.1
	37						
UC208-24	1 1/2	80	49.2	22	52.5	30.2	1.1
	38.1						
UC209-28	1 3/4	85	49.2	22	57.3	30.2	1.1
	44.45						
UC211-32	2	100	55.6	25	70	33.4	1.5
	50.8						
UC212-36	2 1/4	110	65.1	27	77	39.7	1.5
	57.15						
UC213-40	2 1/2	120	65.1	27	82.1	39.7	1.5
	63.5						
UC315-48	3	160	82	43	101.3	50	3.5
	76.2						
UC320-64	4	215	108	54	135.5	66	4.5
	101.6						

Designation	Basic load ratings		Fatigue load limit	Limiting speed with shaft tolerance h6	Mass
	dynamic	static			
	C	C <sub>0</sub>	P <sub>u</sub>	r/min	kg
-	kN		kN		
UC204-12	12.7635	6.7335	0.3015	6600	0.16
UC205-14	14.07	7.839	0.3015	5950	0.21
UC205-15	14.07	7.839	0.3015	5950	0.2
UC205-16	14.07	7.839	0.3015	5950	0.18
UC206-18	19.5975	11.457	0.5025	5100	0.32
UC206-19	19.5975	11.457	0.5025	5100	0.32
UC207-20	25.6275	15.3765	0.7035	4400	0.52
UC207-22	25.6275	15.3765	0.7035	4400	0.47
UC207-23	25.6275	15.3765	0.7035	4400	0.43
UC208-24	32.6625	20.1	0.9045	3850	0.65
UC209-28	32.6625	20.502	0.9045	3500	0.69
UC211-32	43.818	29.145	1.3065	3100	1.22
UC212-36	52.9635	36.18	1.5075	2800	1.37
UC213-40	57.285	40.2	1.7085	2450	1.73
UC315-48	114.57	76.8825	3.015	2400	4.55
UC320-64	174.87	140.7	4.77375	1800	10.7

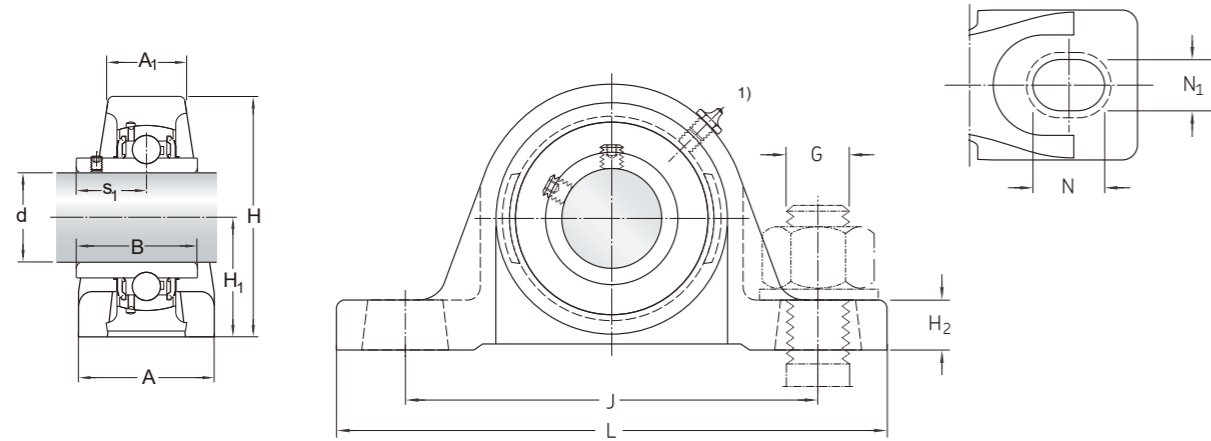
## 2.2 Insert bearing pillow block units, set screws, for metric shafts d 20 – 100 mm



Designations			Dimensions												
Housing	Bearing	Unit													
			d	A	A <sub>1</sub>	B	H	H <sub>1</sub>	H <sub>2</sub>	J	L	N	N <sub>1</sub>	G	s <sub>1</sub>
-			mm											-	mm
P 204	UC 204	UCP 204	20	34	20.8	31	64.29	33.3	13.49	95	127	18	13	M10	18.3
P 205	UC 205	UCP 205	25	38.1	21.27	34	70.64	36.5	15.88	105	139.7	18	13	M10	19.7
P 206	UC 206	UCP 206	30	44.6	23.6	38.1	83.34	42.9	16.67	121	165.1	21	17	M14	22.2
P 306	UC 306	UCP 306	30	47	31.6	43	100	50	21	140	182	19	17	M14	26
P 207	UC 207	UCP 207	35	45.8	26.7	42.9	93.66	47.6	18.26	127	166.69	21	17	M14	25.4
P 307	UC 307	UCP 307	35	54	35.8	48	111.4	56	23	160.5	209	24.5	17	M14	29
P 208	UC 208	UCP 208	40	48.8	29	49.2	101	49.2	20.64	137	184.15	21	17	M14	30.2
P 308	UC 308	UCP 308	40	57	37.8	52	119.4	60	25	170.5	221	26.5	17	M14	33
P 209	UC 209	UCP 209	45	51.2	29.3	49.2	107.95	54	19.05	146	189.71	21	17	M14	30.2
P 309	UC 309	UCP 309	45	63	41.8	57	136	67	25	190	247	29	20	M16	35
P 210	UC 210	UCP 210	50	55.6	30.7	51.6	115.89	57.2	19.05	159	206.38	22	20	M16	32.6
P 310	UC 310	UCP 310	50	65	43	61	152	75	25	212.5	275	34.5	20	M16	39
P 211	UC 211	UCP 211	55	58.9	34.6	55.6	126.21	63.5	22.23	171	219.08	22	20	M16	33.4
P 311	UC 3111	UCP 311	55	68	45	66	162	80	25	236.5	302	37.5	20	M16	41
P 212	UC 212	UCP 212	60	61.6	34.3	65.1	141.29	69.8	22.23	184	239.71	25	20	M16	39.7
P 312	UC 312	UCP 312	60	72	47.8	71	170.8	85	35	250.5	321	36.5	24	M20	45
P 213	UC 213	UCP 213	65	71.9	34.9	65.1	153.59	76.2	25.4	203	265.11	30	25	M20	39.7
P 214	UC 214	UCP 214	70	72.1	40.5	74.6	159.54	79.4	28.18	210	265.91	30	25	M20	44.4
P 215	UC 215	UCP 215	75	73	42	77.8	166	82.6	25.4	217	271.47	30	25	M20	44.5
P 315	UC 315	UCP 315	75	86	57.6	82	202	100	40	290.5	368	39.5	27	M22	50
P 216	UC 216	UCP 216	80	77.8	45.2	82.6	176.21	88.9	34	232	292.1	35	25	M20	49.3
P 316	UC 316	UCP 316	80	93	61.8	86	215	106	40	300.5	378	39.5	27	M22	52
P 217	UC 217	UCP 217	85	83.2	47.6	85.7	188.91	95.2	36	247	310.36	35	25	M20	51.6
P 218	UC 218	UCP 218	90	88	50.8	96	202.41	101.6	38	262	327.03	40	27	M22	56.3
P 320	UC 320	UCP 320	100	107	71.4	108	283	140	55	380	482	49.5	36	M30	66

Designations			Dimensions	Basic load ratings		Fatigue load limit	Limiting speed with shaft tolerance h6	Mass
Housing	Bearing	Unit		dynamic	static			
			d	C	C <sub>0</sub>	P <sub>u</sub>	r/min	kg
-			mm	lbf/kN		lbf/kN	r/min	kg
P 204	UC 204	UCP 204	20	12.7	6.7	0.3	6500	0.66
P 205	UC 205	UCP 205	25	14	7.8	0.3	5850	0.86
P 206	UC 206	UCP 206	30	19.5	11.4	0.5	5000	1.34
P 306	UC 306	UCP 306	30	26.5	15	0.64	5300	2.15
P 207	UC 207	UCP 207	35	25.5	15.3	0.7	4300	1.62
P 307	UC 307	UCP 307	35	33.2	19.3	0.815	4700	3
P 208	UC 208	UCP 208	40	32.5	20	0.9	3750	2.17
P 308	UC 308	UCP 308	40	41	24	1.02	4200	3.55
P 209	UC 209	UCP 209	45	32.5	20.4	0.9	3400	2.4
P 309	UC 309	UCP 309	45	52.7	32	1.34	3750	5.05
P 210	UC 210	UCP 210	50	35.1	23.2	1	3300	2.88
P 310	UC 310	UCP 310	50	61.8	38	1.6	3400	6.4
P 211	UC 211	UCP 211	55	43.6	29	1.3	3000	3.95
P 311	UC 3111	UCP 311	55	71.5	45	1.9	3100	7.8
P 212	UC 212	UCP 212	60	52.7	36	1.5	2700	5.05
P 312	UC 312	UCP 312	60	81.9	52	2.2	2900	9.6
P 213	UC 213	UCP 213	65	57.2	40	1.7	2350	6.63
P 214	UC 214	UCP 214	70	62.4	44	1.9	2250	7.17
P 215	UC 215	UCP 215	75	66.3	49	2	2100	8.17
P 315	UC 315	UCP 315	75	114	76.5	3	2300	15.5
P 216	UC 216	UCP 216	80	71.5	54	2.2	1900	9.3
P 316	UC 316	UCP 316	80	124	86.5	3.25	2150	18.2
P 217	UC 217	UCP 217	85	83.2	64	2.5	1800	12.9
P 218	UC 218	UCP 218	90	95.6	72	2.7	1600	14.5
P 320	UC 320	UCP 320	100	174	140	4.75	1700	36.7

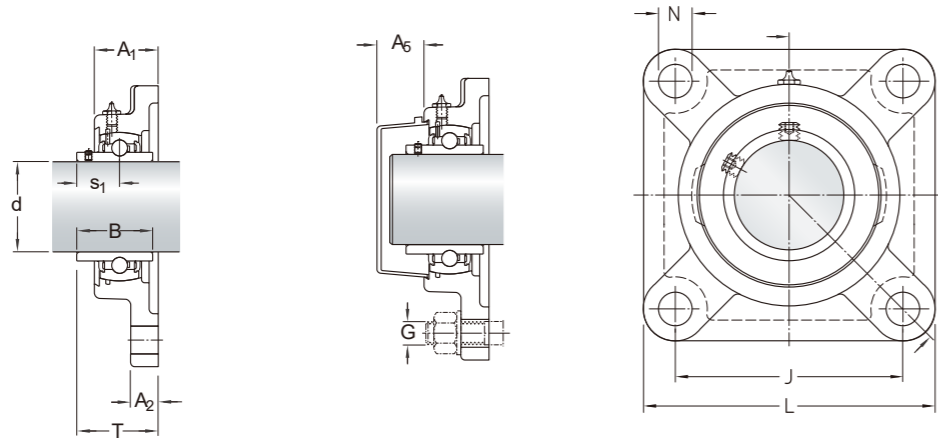
## 2.2 Insert bearing pillow block units, set screws, for inch shaft d 3/4 – 4 in



Designations			Dimensions													
Housing	Bearing	Unit	Dimensions													
			d	A	A <sub>1</sub>	B	H	H <sub>1</sub>	H <sub>2</sub>	J	L	N	N <sub>1</sub>	G	s <sub>1</sub>	
			in/mm	mm											-	mm
P204	UC204-12	UCP204-12	3/4 19.05	34	20.8	31	64.29	33.3	13.49	95	127	18	13	M10	18.3	
P205	UC205-14	UCP205-14	7/8 22	38.1	21.27	34	70.64	36.5	15.88	105	139.7	18	13	M10	19.7	
P205	UC205-15	UCP205-15	15/16 24	38.1	21.27	34	70.64	36.5	15.88	105	139.7	18	13	M10	19.7	
P205	UC205-16	UCP205-16	1 25.4	38.1	21.27	34	70.64	36.5	15.88	105	139.7	18	13	M10	19.7	
P206	UC206-18	UCP206-18	1 1/8 29	44.6	23.6	38.1	83.34	42.9	16.67	121	165.1	21	17	M10	22.2	
P206	UC206-19	UCP206-19	1 3/16 30	44.6	23.6	38.1	83.34	42.9	16.67	121	165.1	21	17	M10	22.2	
P207	UC207-20	UCP207-20	1 1/4 31.75	45.8	26.7	42.9	93.66	47.6	18.26	127	166.69	21	17	M12	25.4	
P207	UC207-22	UCP207-22	1 3/8 35	45.8	26.7	42.9	93.66	47.6	18.26	127	166.69	21	17	M12	25.4	
P207	UC207-23	UCP207-23	1 7/16 37	45.8	26.7	42.9	93.66	47.6	18.26	127	166.69	21	17	M12	25.4	
P208	UC208-24	UCP208-24	1 1/2 38.1	48.8	29	49.2	101	49.2	20.64	137	184.15	21	17	M14	30.2	
P209	UC209-28	UCP209-28	1 3/4 44.45	51.2	29.3	49.2	107.95	54	19.05	146	189.71	21	17	M14	30.2	
P211	UC211-32	UCP211-32	2 50.8	58.9	34.6	55.6	126.21	63.5	22.23	171	219.08	22	20	M16	33.4	
P212	UC212-36	UCP212-36	2 1/4 57.15	61.6	34.3	65.1	141.29	69.8	22.23	184	239.71	25	20	M16	39.7	
P213	UC213-40	UCP213-40	2 1/2 63.5	71.9	34.9	65.1	153.59	76.2	25.4	203	265.11	30	25	M16	39.7	
P315	UC315-48	UCP315-48	3 76.2	86	57.6	82	202.7	100	40	290	368	39.5	27	22	50	
P320	UC320-64	UCP320-64	4 101.6	107	71.4	108	283.7	140	55	380	482	49.5	36	30	66	

Designations			Basic load ratings		Fatigue load limit	Limiting speed with shaft tolerance h6	Mass
Housing	Bearing	Unit	dynamic	static			
			C	C <sub>0</sub>	P <sub>u</sub>	r/min	kg
			kN				
P204	UC204-12	UCP204-12	12.7	6.7	0.3	6500	0.67
P205	UC205-14	UCP205-14	14	7.8	0.3	5850	0.89
P205	UC205-15	UCP205-15	14	7.8	0.3	5850	0.88
P205	UC205-16	UCP205-16	14	7.8	0.3	5850	0.86
P206	UC206-18	UCP206-18	19.5	11.4	0.5	5000	1.36
P206	UC206-19	UCP206-19	19.5	11.4	0.5	5000	1.34
P207	UC207-20	UCP207-20	25.5	15.3	0.7	4300	1.67
P207	UC207-22	UCP207-22	25.5	15.3	0.7	4300	1.62
P207	UC207-23	UCP207-23	25.5	15.3	0.7	4300	1.59
P208	UC208-24	UCP208-24	32.5	20	0.9	3750	2.22
P209	UC209-28	UCP209-28	32.5	20.4	0.9	3400	2.41
P211	UC211-32	UCP211-32	43.6	29	1.3	3000	4.1
P212	UC212-36	UCP212-36	52.7	36	1.5	2700	5.18
P213	UC213-40	UCP213-40	57.2	40	1.7	2350	6.7
P315	UC315-48	UCP315-48	114	76.5	3	2300	15.4
P320	UC320-64	UCP320-64	174	140	4.75	1700	36.4

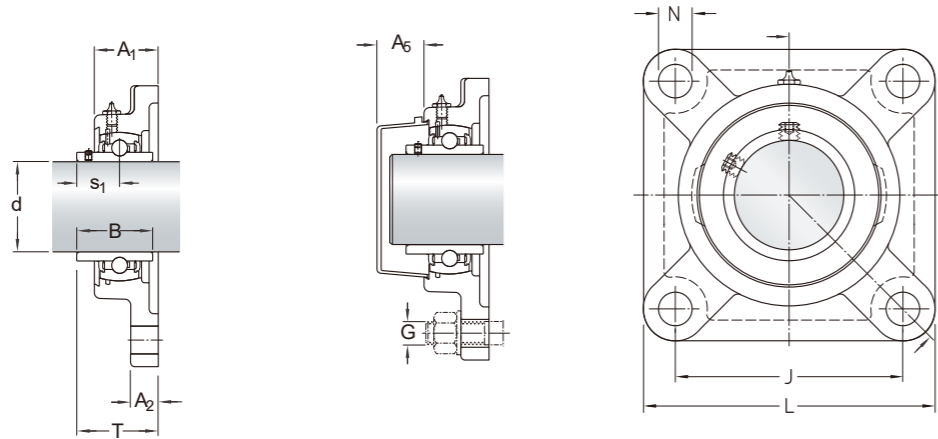
## 2.3 Insert bearing flanged units with square 4-bolt flange housing, set screws, for metric shafts d 20 – 100 mm



Designations				Dimensions										
Housing	Bearing	Appropriate end cover	Unit											
				d	A <sub>1</sub>	A <sub>2</sub>	B	J	L	N	G	s <sub>1</sub>	T	A <sub>5</sub>
-				mm										
F204	UC204	ECY204	UCF204	20	25.4	11.1	31	64	85.7	12	M10	18.3	33.3	18.5
F205	UC205	ECY205	UCF205	25	26.9	12.7	34	70	95.3	12	M10	19.7	35.7	18
F206	UC206	ECY206	UCF206	30	30	14.3	38.1	83	108	12	M10	22.2	40.2	20
F306	UC306	-	UCF306	30	33.8	16	43	95	127	16	M14	26	44	-
F207	UC207	ECY207	UCF207	35	32	15.1	42.9	92	117.5	14	M12	25.4	44.4	22
F307	UC307	-	UCF307	35	38	17	48	100	137	19	M16	29	49	-
F208	UC208	ECY208	UCF208	40	35.7	15.1	49.2	102	130.2	16	M14	30.2	51.2	23.5
F308	UC308	-	UCF308	40	42	18	52	112	149	19	M16	33	56	-
F209	UC209	ECY209	UCF209	45	38.1	15.9	49.2	105	136.5	16	M14	30.2	52.2	23
F309	UC309	-	UCF309	45	45.8	19	57	125	162	19	M16	35	60	-
F210	UC210	ECY210	UCF210	50	39.7	15.9	51.6	111	142.9	16	M14	32.6	54.6	29.5
F310	UC310	-	UCF310	50	49.5	20	61	132	175	23	M20	39	67	-
F211	UC211	ECY211	UCF211	55	42.9	18.3	55.6	130	161.9	19	M16	33.4	58.4	34
F311	UC311	-	UCF311	55	52.9	21	66	140	183	23	M20	41	71	-
F212	UC212	ECY212	UCF212	60	47.6	18.3	65.1	143	174.6	19	M16	39.7	68.7	35.5
F312	UC312	-	UCF312	60	57.4	23	71	150	193	23	M20	45	78	-
F213	UC213	ECY213	UCF213	65	50	22.2	65.1	149	187.3	19	M16	39.7	69.7	35.5
F214	UC214	ECY214	UCF214	70	53.9	22.2	74.6	152	192.9	19	M16	44.4	75.4	38.5
F215	UC215	ECY215	UCF215	75	56.4	22.2	77.8	159	200	19	M16	44.5	78.5	38.5
F315	UC315	-	UCF315	75	68	26	82	184	229	25	M22	50	89	-
F216	UC216	ECY216	UCF216	80	57.9	22.2	82.6	165	207.9	23	M20	49.3	83.3	41.5
F316	UC316	-	UCF316	80	68.7	28	86	196	252	31	M28	52	90	-
F217	UC217	ECY217	UCF217	85	62.7	23.8	85.7	175	219.9	23	M20	51.6	87.6	43.2
F218	UC218	ECY218	UCF218	90	68.3	25.4	96	187	234.9	23	M20	56.3	96.3	45.3
F320	UC320	-	UCF320	100	94.5	33	108	242	312	38	M33	66	125	-

Designations				Basic load ratings		Fatigue load limit	Limiting speed with shaft tolerance h6	Mass
Housing	Bearing	Appropriate end cover	Unit	dynamic	static			
				C	C <sub>0</sub>	P <sub>u</sub>	r/min	kg
-				kN				
F204	UC204	ECY204	UCF204	12.76	6.73	0.30	6600	0.49
F205	UC205	ECY205	UCF205	14.07	7.84	0.30	5950	0.63
F206	UC206	ECY206	UCF206	19.60	11.46	0.50	5100	0.89
F306	UC306	-	UCF306	26.63	15.08	0.64	5400	1.75
F207	UC207	ECY207	UCF207	25.63	15.38	0.70	4400	1.25
F307	UC307	-	UCF307	33.37	19.40	0.82	4800	2.1
F208	UC208	ECY208	UCF208	32.66	20.10	0.90	3850	1.69
F308	UC308	-	UCF308	41.21	24.12	1.03	4300	2.95
F209	UC209	ECY209	UCF209	32.66	20.50	0.90	3500	1.96
F309	UC309	-	UCF309	52.96	32.16	1.35	3850	3.8
F210	UC210	ECY210	UCF210	35.28	23.32	1.01	3400	2.23
F310	UC310	-	UCF310	62.11	38.19	1.61	3500	5.05
F211	UC211	ECY211	UCF211	43.82	29.15	1.31	3100	3.6
F311	UC311	-	UCF311	71.86	45.23	1.91	3200	5.5
F212	UC212	ECY212	UCF212	52.96	36.18	1.51	2800	3.97
F312	UC312	-	UCF312	82.31	52.26	2.21	3000	7
F213	UC213	ECY213	UCF213	57.49	40.20	1.71	2450	5.08
F214	UC214	ECY214	UCF214	62.71	44.22	1.91	2350	5.34
F215	UC215	ECY215	UCF215	66.63	49.25	2.01	2200	5.86
F315	UC315	-	UCF315	114.57	76.88	3.02	2400	11.6
F216	UC216	ECY216	UCF216	71.86	54.27	2.21	2000	7.02
F316	UC316	-	UCF316	124.62	86.93	3.27	2250	15.4
F217	UC217	ECY217	UCF217	83.62	64.32	2.51	1900	8.91
F218	UC218	ECY218	UCF218	96.08	72.36	2.71	1700	11.38
F320	UC320	-	UCF320	174.87	140.70	4.77	1800	29.8

## 2.3 Insert bearing flanged units with 4-bolt flange housing, set screws, for inch shaft d 3/4 – 4 in

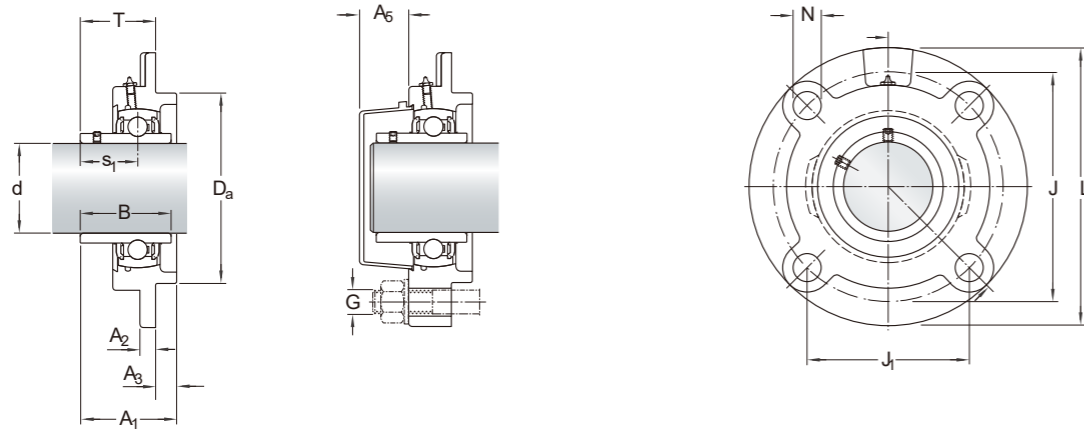


Designations				Dimensions										
Housing	Bearing	Appropriate end cover	Unit	d	mm									
					A <sub>1</sub>	A <sub>2</sub>	B	J	L	N	G	S <sub>1</sub>	T	A <sub>5</sub>
-				in/mm										
F204	UC204-12	ECY204	UCF204-12	3/4	25.4	11.1	31	64	85.7	12	M10	18.3	33.3	18.5
				19.05										
F205	UC205-14	ECY205	UCF205-14	7/8	26.9	12.7	34	70	95.3	12	M10	19.7	35.7	18
				22										
F205	UC205-15	ECY205	UCF205-15	15/16	26.9	12.7	34	70	95.3	12	M10	19.7	35.7	18
				24										
F205	UC205-16	ECY205	UCF205-16	1	26.9	12.7	34	70	95.3	12	M10	19.7	35.7	18
				25.4										
F206	UC206-18	ECY206	UCF206-18	1 1/8	30	14.3	38.1	83	108	12	M10	22.2	40.2	20
				29										
F206	UC206-19	ECY206	UCF206-19	1 3/16	30	14.3	38.1	83	108	12	M10	22.2	40.2	20
				30										
F207	UC207-20	ECY207	UCF207-20	1 1/4	32	15.1	42.9	92	117.5	14	M12	25.4	44.4	22
				31.75										
F207	UC207-22	ECY207	UCF207-22	1 3/8	32	15.1	42.9	92	117.5	14	M12	25.4	44.4	22
				35										
F207	UC207-23	ECY207	UCF207-23	1 7/16	32	15.1	42.9	92	117.5	14	M12	25.4	44.4	22
				37										
F208	UC208-24	ECY208	UCF208-24	1 1/2	35.7	15.1	49.2	102	130.2	16	M14	30.2	51.2	23.5
				38.1										
F209	UC209-28	ECY209	UCF209-28	1 3/4	38.1	15.9	49.2	105	136.5	16	M14	30.2	52.2	23
				44.45										
F211	UC211-32	ECY211	UCF211-32	2	42.9	18.3	55.6	130	161.9	19	M16	33.4	58.4	34
				50.8										
F212	UC212-36	ECY212	UCF212-36	2 1/4	47.6	18.3	65.1	143	174.6	19	M16	39.7	68.7	35.5
				57.15										
F213	UC213-40	ECY213	UCF213-40	2 1/2	50	22.2	65.1	149	187.3	19	M16	39.7	69.7	35.5
				63.5										
F315	UC315-48	-	UCF315-48	3	68	26	82	184	229	25	22	50	89	-
				76.2										
F320	UC320-64	-	UCF320-64	4	94.5	33	108	242	312	38	33	66	125	-
				101.6										

Designations				Basic load ratings		Fatigue load limit	Limiting speed with shaft tolerance h6	Mass
Housing	Bearing	Appropriate end cover	Unit	dynamic	static			
				C	C <sub>0</sub>	P <sub>u</sub>	r/min	kg
-				kN				
F204	UC204-12	ECY204	UCF204-12	12.76	6.73	0.30	6600	0.5
F205	UC205-14	ECY205	UCF205-14	14.07	7.84	0.30	5950	0.65
F205	UC205-15	ECY205	UCF205-15	14.07	7.84	0.30	5950	0.64
F205	UC205-16	ECY205	UCF205-16	14.07	7.84	0.30	5950	0.62
F206	UC206-18	ECY206	UCF206-18	19.60	11.46	0.50	5100	0.91
F206	UC206-19	ECY206	UCF206-19	19.60	11.46	0.50	5100	0.89
F207	UC207-20	ECY207	UCF207-20	25.63	15.38	0.70	4400	1.31
F207	UC207-22	ECY207	UCF207-22	25.63	15.38	0.70	4400	1.25
F207	UC207-23	ECY207	UCF207-23	25.63	15.38	0.70	4400	1.22
F208	UC208-24	ECY208	UCF208-24	32.66	20.10	0.90	3850	1.73
F209	UC209-28	ECY209	UCF209-28	32.66	20.50	0.90	3500	1.97
F211	UC211-32	ECY211	UCF211-32	43.82	29.15	1.31	3100	3.75
F212	UC212-36	ECY212	UCF212-36	52.96	36.18	1.51	2800	4.1
F213	UC213-40	ECY213	UCF213-40	57.49	40.20	1.71	2450	5.16
F315	UC315-48	-	UCF315-48	114.57	76.88	3.02	2400	11.6
F320	UC320-64	-	UCF320-64	174.87	140.70	4.77	1800	29.5



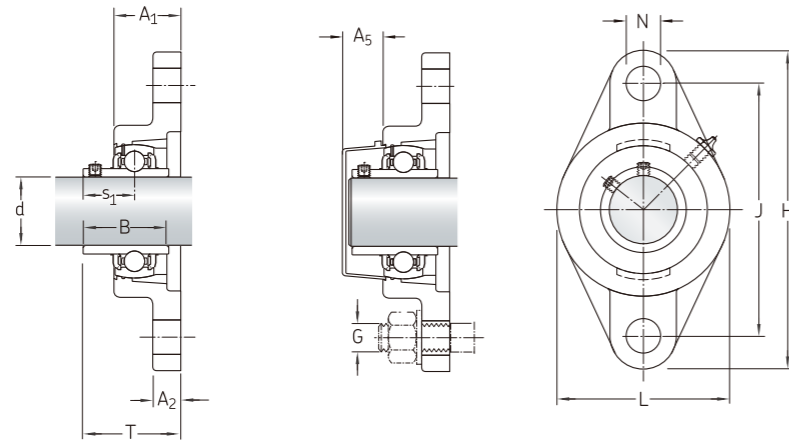
## 2.4 Insert bearing flanged unit with round 4-bolt flange housing, set screws, for metric shafts d 20 – 90 mm



Designations				Dimensions														
Housing	Bearing	Appropriate end cover	Unit															
				d	A <sub>1</sub>	A <sub>2</sub>	A <sub>3</sub>	B	D <sub>a</sub>	J	J <sub>2</sub>	L	N	G	S <sub>1</sub>	T	A <sub>5</sub>	
-				mm							-	mm						
FC 204	UC204	ECY204	UCFC204	20	26	10	5	31	62	78	55.1	100	12	M10	18.3	28.3	18.5	
FC 205	UC205	ECY205	UCFC205	25	27.3	10	6	34	70	90	63.6	115.1	12	M10	19.7	29.7	18	
FC 206	UC206	ECY206	UCFC206	30	30	10	8	38.1	80	100	70.7	124.6	12	M10	22.2	32.2	20	
FC 207	UC207	ECY207	UCFC207	35	32	11	8	42.9	90	110	77.8	134.9	14	M12	25.4	36.4	22	
FC 208	UC208	ECY208	UCFC208	40	35.7	11	10	49.2	100	120	84.8	145.3	14	M12	30.2	41.2	23.5	
FC 209	UC209	ECY209	UCFC209	45	37.6	10	12	49.2	105	132	93.3	160.3	16	M14	30.2	40.2	23	
FC 210	UC210	ECY210	UCFC210	50	38.8	10	12	51.6	110	138	97.6	165.1	16	M14	32.6	42.6	29.5	
FC 211	UC211	ECY211	UCFC211	55	43	13	12	55.6	125	150	106.1	184.9	19	M16	33.4	46.4	34	
FC 212	UC212	ECY212	UCFC212	60	47.6	17	12	65.1	135	160	113.1	195.3	19	M16	39.7	56.7	35.5	
FC 213	UC213	ECY213	UCFC213	65	50	16	14	65.1	145	170	120.2	204.8	19	M16	39.7	55.7	35.5	
FC 214	UC214	ECY214	UCFC214	70	53.9	17	14	74.6	150	177	125.1	215.1	19	M16	44.4	61.4	38.5	
FC 215	UC215	ECY215	UCFC215	75	55.9	18	16	77.8	160	184	130.1	220	19	M16	44.5	62.5	38.5	
FC 216	UC216	ECY216	UCFC216	80	57.9	18	16	82.6	170	200	141.4	239.7	23	M20	49.3	67.3	41.5	
FC 217	UC217	ECY217	UCFC217	85	62.7	18	18	85.7	180	208	147.1	250	23	M20	51.6	69.6	43.2	
FC 218	UC218	ECY218	UCFC218	90	68.3	22	18	96	190	220	155.5	265.1	23	M20	56.3	78.3	45.3	

Designations				Basic load ratings		Fatigue load limit	Limiting speed with shaft tolerance h6	Mass
Housing	Bearing	Appropriate end cover	Unit	dynamic	static			
				C	C <sub>0</sub>	P <sub>u</sub>	r/min	kg
-				kN				
FC 204	UC204	ECY204	UCFC204	12.76	6.73	0.30	6600	0.72
FC 205	UC205	ECY205	UCFC205	14.07	7.84	0.30	5950	1.01
FC 206	UC206	ECY206	UCFC206	19.60	11.46	0.50	5100	1.29
FC 207	UC207	ECY207	UCFC207	25.63	15.38	0.70	4400	1.61
FC 208	UC208	ECY208	UCFC208	32.66	20.10	0.90	3850	2.02
FC 209	UC209	ECY209	UCFC209	32.66	20.50	0.90	3500	2.45
FC 210	UC210	ECY210	UCFC210	35.28	23.32	1.01	3400	2.95
FC 211	UC211	ECY211	UCFC211	43.82	29.15	1.31	3100	4.26
FC 212	UC212	ECY212	UCFC212	52.96	36.18	1.51	2800	5.1
FC 213	UC213	ECY213	UCFC213	57.49	40.20	1.71	2450	5.7
FC 214	UC214	ECY214	UCFC214	62.71	44.22	1.91	2350	6.87
FC 215	UC215	ECY215	UCFC215	66.63	49.25	2.01	2200	7.86
FC 216	UC216	ECY216	UCFC216	71.86	54.27	2.21	2000	9.12
FC 217	UC217	ECY217	UCFC217	83.62	64.32	2.51	1900	10.3
FC 218	UC218	ECY218	UCFC218	96.08	72.36	2.71	1700	11.9

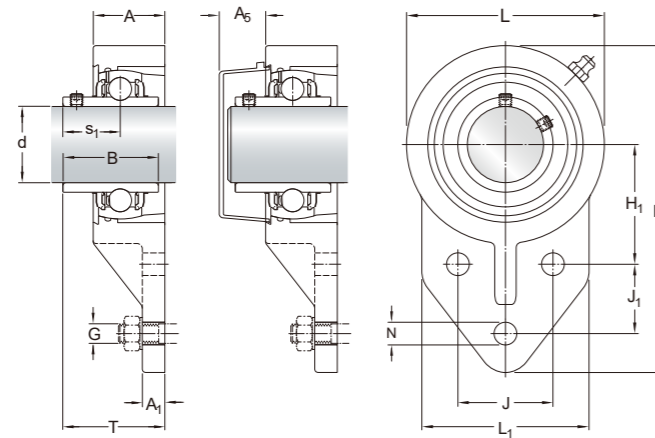
## 2.5 Insert bearing flanged units with oval 2-bolt flange housing, set screws, for metric shafts d 20 – 90 mm



Designations				Dimensions												
Housing	Bearing	Appropriate end cover	Unit													
				d	A <sub>1</sub>	A <sub>2</sub>	B	H	J	L	N	G	S <sub>1</sub>	T	A <sub>5</sub>	
-				mm										-	mm	
FL 204	UC 204	ECY 204	UCFL 204	20	25.5	11.1	31	113	90	60.3	12	M10	18.3	33.3	18.5	
FL 205	UC 205	ECY 205	UCFL 205	25	27	12.7	34	130.2	99	68.3	16	M14	19.7	35.7	18	
FL 206	UC 206	ECY 206	UCFL 206	30	30	12.7	38.1	147.6	117	80.2	16	M14	22.2	40.2	20	
FL 207	UC 207	ECY 207	UCFL 207	35	32	14.3	42.9	161.1	130	89.7	16	M14	25.4	44.4	22	
FL 208	UC 208	ECY 208	UCFL 208	40	34	14.3	49.2	174.6	144	100	16	M14	30.2	51.2	23.5	
FL 209	UC 209	ECY 209	UCFL 209	45	35	15.1	49.2	188.1	148	108	19	M16	30.2	52.2	23	
FL 210	UC 210	ECY 210	UCFL 210	50	39	15.1	51.6	196.9	157	115.1	19	M16	32.6	54.6	29.5	
FL 211	UC 211	ECY 211	UCFL 211	55	41.4	18.3	55.6	223.8	184	130.2	19	M16	33.4	58.4	34	
FL 212	UC 212	ECY 212	UCFL 212	60	45	18.3	65.1	250	202	139.7	23	M20	39.7	68.7	35.5	
FL 213	UC 213	ECY 213	UCFL 213	65	47	19.8	65.1	258	210	154.8	23	M20	39.7	69.7	35.5	
FL 214	UC 214	ECY 214	UCFL 214	70	50	19.8	74.6	265.1	216	160.3	23	M20	44.4	75.4	38.5	
FL 215	UC 215	ECY 215	UCFL 215	75	54	20	77.8	275	225	164	23	M20	44.5	78.5	38.5	
FL 216	UC 216	ECY 216	UCFL 216	80	56	20	82.6	290	233	180	25	M22	49.3	83.3	41.5	
FL 217	UC 217	ECY 217	UCFL 217	85	60	22	85.7	305	248	190	25	M22	51.6	87.6	43.2	
FL 218	UC 218	ECY 218	UCFL 218	90	68	23	96	320	265	205	25	M22	56.3	96.3	45.3	

Designations				Basic load ratings		Fatigue load limit	Limiting speed with shaft tolerance h6	Mass
Housing	Bearing	Appropriate end cover	Unit	dynamic	static			
				C	C <sub>0</sub>	P <sub>u</sub>	r/min	kg
-				kN				
FL 204	UC 204	ECY 204	UCFL 204	12.76	6.73	0.30	6600	0.44
FL 205	UC 205	ECY 205	UCFL 205	14.07	7.84	0.30	5950	0.62
FL 206	UC 206	ECY 206	UCFL 206	19.60	11.46	0.50	5100	0.9
FL 207	UC 207	ECY 207	UCFL 207	25.63	15.38	0.70	4400	1.19
FL 208	UC 208	ECY 208	UCFL 208	32.66	20.10	0.90	3850	1.53
FL 209	UC 209	ECY 209	UCFL 209	32.66	20.50	0.90	3500	1.84
FL 210	UC 210	ECY 210	UCFL 210	35.28	23.32	1.01	3400	2.17
FL 211	UC 211	ECY 211	UCFL 211	43.82	29.15	1.31	3100	3.12
FL 212	UC 212	ECY 212	UCFL 212	52.96	36.18	1.51	2800	3.99
FL 213	UC 213	ECY 213	UCFL 213	57.49	40.20	1.71	2450	4.93
FL 214	UC 214	ECY 214	UCFL 214	62.71	44.22	1.91	2350	5.46
FL 215	UC 215	ECY 215	UCFL 215	66.63	49.25	2.01	2200	5.99
FL 216	UC 216	ECY 216	UCFL 216	71.86	54.27	2.21	2000	7.52
FL 217	UC 217	ECY 217	UCFL 217	83.62	64.32	2.51	1900	8.83
FL 218	UC 218	ECY 218	UCFL 218	96.08	72.36	2.71	1700	10.7

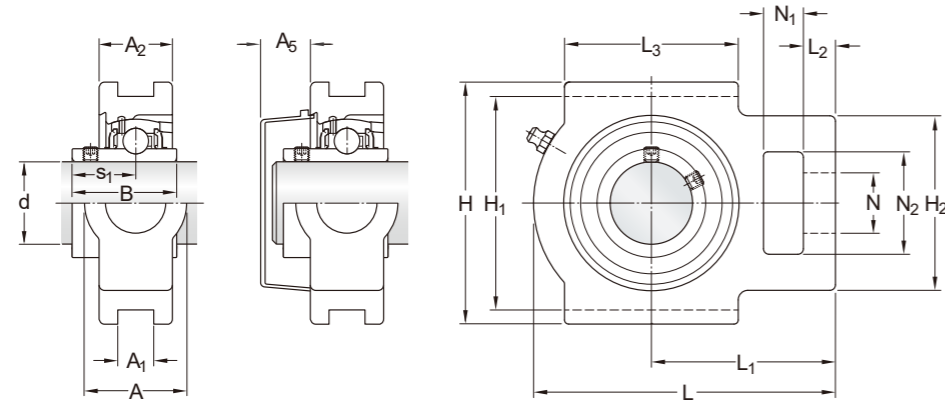
## 2.6 3-bolt bracket flanged ball bearing units, set screws, for metric shafts d 20 – 45 mm



Designations				Dimensions														
Housing	Bearing	Appropriate end cover	Unit	mm														
				d	H	L	A	J	J <sub>1</sub>	N	H <sub>1</sub>	L <sub>1</sub>	A <sub>1</sub>	A <sub>5</sub>	T	B	S <sub>1</sub>	G
-	-	-	-	mm														
FB204	UC204	ECY204	UCFB204	20	111.9	63.5	25.4	32	27	9.5	42	63.5	8	20.5	31.8	31	18.3	M8
FB205	UC205	ECY205	UCFB205	25	118.1	69.9	27.2	34	27	9.5	45	66	9.5	20.5	34.7	34	19.7	M8
FB206	UC206	ECY206	UCFB206	30	136.5	82.6	30	40	29	9.5	50	69.9	9.5	22.5	40.9	38.1	15.9	M8
FB207	UC207	ECY207	UCFB207	35	144	90	33.5	46	32	9.5	55	82.6	12.7	24.5	44.4	42.9	17.5	M8
FB208	UC208	ECY208	UCFB208	40	164.3	100	35.7	50	41	11	60	77.8	15.9	26	51.2	49.2	19	M10
FB209	UC209	ECY209	UCFB209	45	175.5	106.4	36.8	54	43	11	65	80.2	18.3	26.5	50.2	49.2	19	M10

Designations				Basic load ratings		Fatigue load limit	Limiting speed with shaft tolerance h6	Mass
Housing	Bearing	Appropriate end cover	Unit	dynamic	static			
				C	C <sub>0</sub>	P <sub>u</sub>	r/min	kg
-	-	-	-	kN				
FB204	UC204	ECY204	UCFB204	12.76	6.73	0.29	6600	0.59
FB205	UC205	ECY205	UCFB205	14.07	7.84	0.34	5950	0.72
FB206	UC206	ECY206	UCFB206	19.60	11.46	0.50	5100	0.98
FB207	UC207	ECY207	UCFB207	25.63	15.38	0.70	4400	1.29
FB208	UC208	ECY208	UCFB208	32.66	20.10	0.90	3850	1.7
FB209	UC209	ECY209	UCFB209	32.66	20.50	0.90	3500	1.99

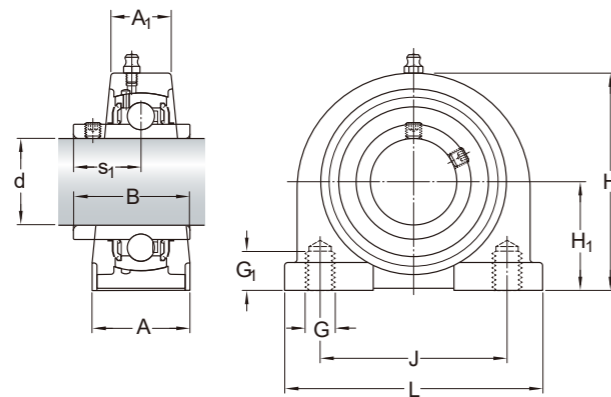
## 2.7 Take-up ball bearing units, set crews, for metric shafts d 20 – 85 mm



Designations				Dimensions																			
Housing	Bearing	Appropriate end cover	Unit	Dimensions																			
				d	A	A <sub>1</sub>	A <sub>2</sub>	A <sub>5</sub>	H	H <sub>1</sub>	H <sub>2</sub>	L	L <sub>1</sub>	L <sub>2</sub>	L <sub>3</sub>	N	N <sub>1</sub>	N <sub>2</sub>	B	S <sub>1</sub>			
-				mm												-		mm		-		mm	
T204	UC204	ECY204	UCT204	20	31.8	12	20.6	20.5	88.9	76	50.8	96	61.1	10.3	50.8	19	15.9	31.8	31	18.3			
T205	UC205	ECY205	UCT205	25	31.8	12	23.8	20.5	88.9	76	50.8	99	61.9	10.3	50.8	19	15.9	31.8	34	19.7			
T206	UC206	ECY206	UCT206	30	37.3	12	27.8	22.5	102.4	89	56.4	115	69.9	10.3	57.2	22	15.9	37.3	38.1	22.2			
T207	UC207	ECY207	UCT207	35	37.3	12	30.2	24.5	102.4	89	64.3	131	77.8	12.7	64.3	22	15.9	37.3	42.9	25.4			
T208	UC208	ECY208	UCT208	40	49.2	16	33.3	26	114.3	102	83.3	146	88.1	15.9	83.3	29	19.1	49.2	49.2	30.2			
T209	UC209	ECY209	UCT209	45	49.2	16	34.9	26.5	116.7	102	83.3	146	87.3	15.9	83.3	29	21.1	51.2	49.2	30.2			
T210	UC210	ECY210	UCT210	50	49.2	16	37.3	33	116.7	102	83.3	151	89.7	15.9	85.7	29	19.1	49.2	51.6	32.6			
T211	UC211	ECY211	UCT211	55	64.3	22	38.1	37.5	146.1	130	102.4	173	106.4	19.1	95.3	35	25.4	64.3	55.6	33.4			
T212	UC212	ECY212	UCT212	60	64.3	22	42.1	39	146.1	130	102.4	196	119.1	19.1	102.4	35	31.8	64.3	65.1	39.4			
T213	UC213	ECY213	UCT213	65	69.9	26	43.7	39	166.7	151	111.1	226	137.3	20.6	120.7	41	31.8	69.9	65.1	39.4			
T214	UC214	ECY214	UCT214	70	69.9	26	46	41.5	166.7	151	111.1	226	137.3	20.6	120.7	41	31.8	69.9	74.6	44.4			
T215	UC215	ECY215	UCT215	75	69.9	26	47.6	41.5	166.7	151	111.1	234	139.7	20.6	120.7	41	31.8	69.9	77.8	44.5			
T216	UC216	ECY216	UCT216	80	69.9	26	50.8	41.5	184.2	165	111.1	237	139.7	20.6	120.7	41	31.8	69.9	82.6	49.3			
T217	UC217	ECY217	UCT217	85	73	30	54	43	198	173	124	263	162	29	157	48	38	73	85.7	51.6			

Designations				Basic load ratings		Fatigue load limit	Limiting speed with shaft tolerance h6	Mass
Housing	Bearing	Appropriate end cover	Unit	dynamic	static			
				C	C <sub>0</sub>	P <sub>0</sub>	r/min	kg
-				kN				
T204	UC204	ECY204	UCT204	12.76	6.73	0.30	6600	0.7
T205	UC205	ECY205	UCT205	14.07	7.84	0.30	5950	0.78
T206	UC206	ECY206	UCT206	19.60	11.46	0.50	5100	1.22
T207	UC207	ECY207	UCT207	25.63	15.38	0.70	4400	1.62
T208	UC208	ECY208	UCT208	32.66	20.10	0.90	3850	2.37
T209	UC209	ECY209	UCT209	32.66	20.50	0.90	3500	2.33
T210	UC210	ECY210	UCT210	35.28	23.32	1.01	3400	2.5
T211	UC211	ECY211	UCT211	43.82	29.15	1.31	3100	3.92
T212	UC212	ECY212	UCT212	52.96	36.18	1.51	2800	4.81
T213	UC213	ECY213	UCT213	57.49	40.20	1.71	2450	6.78
T214	UC214	ECY214	UCT214	62.71	44.22	1.91	2350	6.93
T215	UC215	ECY215	UCT215	66.63	49.25	2.01	2200	7.75
T216	UC216	ECY216	UCT216	71.86	54.27	2.21	2000	8.18
T217	UC217	ECY217	UCT217	83.62	64.32	2.51	1900	10.88

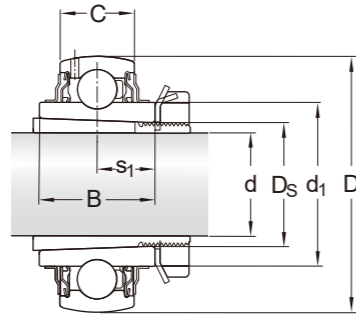
## 2.8 Tapped base Plummer block ball bearing units, set screws for metric shafts d 20 - 85 mm



Designations			Dimensions									
Housing	Bearing	Unit										
			d	H <sub>1</sub>	L	A	J	G	H	G <sub>1</sub>	B	S <sub>1</sub>
-			mm									
PA204	UC204	UCPA204	20	30.2	76.2	34	52	M10X1.5	60	13	31	12.7
PA205	UC205	UCPA205	25	36.5	84.1	39.5	56	M10X1.5	71	13	34	14.3
PA206	UC206	UCPA206	30	42.8	93.7	38.9	66	M14X2	84.1	18	38.1	15.9
PA207	UC207	UCPA207	35	47.6	110.3	42.1	80	M14X2	93	20	42.9	17.5
PA208	UC208	UCPA208	40	49.2	115.9	44.5	84	M14X2	98	20	49.2	19
PA209	UC209	UCPA209	45	54.2	119.8	45	90	M14X2	106	25	49.2	19
PA210	UC210	UCPA210	50	57.2	130.2	50.5	94	M16X2	113	25	51.6	19

Designations			Basic load ratings		Fatigue load limit	Limiting speed with shaft tolerance h6	Mass
Housing	Bearing	Unit	dynamic	static			
			C	C <sub>0</sub>	P <sub>u</sub>	r/min	kg
-			kN				
PA204	UC204	UCPA204	12.76	6.73	0.30	6600	0.54
PA205	UC205	UCPA205	14.07	7.84	0.30	5950	0.76
PA206	UC206	UCPA206	19.60	11.46	0.50	5100	0.99
PA207	UC207	UCPA207	25.63	15.38	0.70	4400	1.46
PA208	UC208	UCPA208	32.66	20.10	0.90	3850	1.67
PA209	UC209	UCPA209	32.66	20.50	0.90	3500	1.86
PA210	UC210	UCPA210	35.28	23.32	1.01	3400	2.25

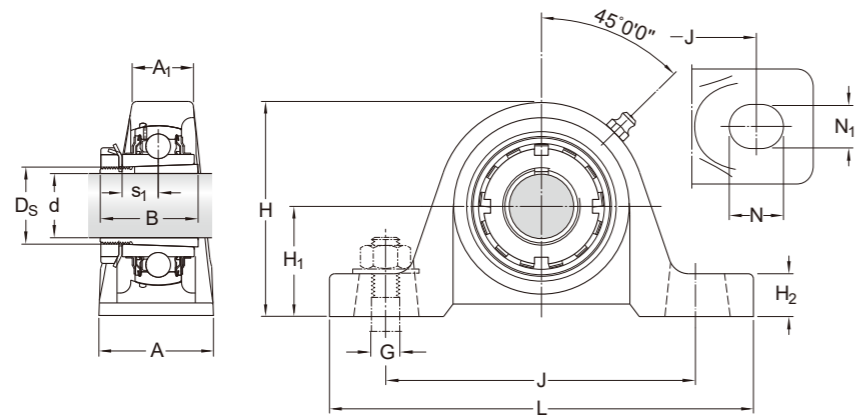
## 2.9 Insert bearings with set screws, metric shafts d 25 – 90 mm



Designation	Dimensions						
	d	D <sub>s</sub>	D	B	C	d <sub>1</sub>	s <sub>1</sub>
-	mm						
UK205K	25	?	52	24	15	33.74	12
UK206K	30		62	28	18	39.7	14
UK207K	35		72	30.5	19	46.1	15.25
UK208K	40		80	33.9	21	51.8	16.95
UK209K	45		85	35	22	56.8	17.5
UK210K	50		90	37	22	62.51	18.5
UK211K	55		100	40	25	69.06	20
UK212K	60		110	42.5	26	75.64	21.25
UK213K	65		120	43.5	27	82.5	21.75
UK215K	70		130	47.8	29	92.05	23.9
UK216K	75		140	45.6	30	97.4	22.8
UK217K	80		150	52.4	34	106.05	26.2
UK218K	90		160	57.8	36	12.5	28.9

Designation	Basic load ratings		Fatigue load limit	Limiting speed with shaft tolerance h6	Mass
	dynamic	static			
-	C	C <sub>0</sub>	P <sub>u</sub>	r/min	kg
-	kN				
UK205K	14.07	7.84	0.34	5950	0.15
UK206K	19.60	11.26	0.48	5100	0.25
UK207K	25.63	15.38	0.66	4400	0.36
UK208K	30.85	19.10	0.80	3850	0.48
UK209K	35.38	21.71	0.92	3500	0.54
UK210K	35.28	23.32	0.98	3400	0.6
UK211K	43.82	29.15	1.26	3100	0.82
UK212K	42.91	36.18	1.54	2800	1.05
UK213K	57.49	40.20	1.71	2450	1.35
UK215K	66.33	49.25	2.01	2100	1.6
UK216K	73.37	53.27	2.17	1850	1.8
UK217K	83.42	64.32	2.51	1700	2.45
UK218K	96.48	72.36	2.71	1600	3

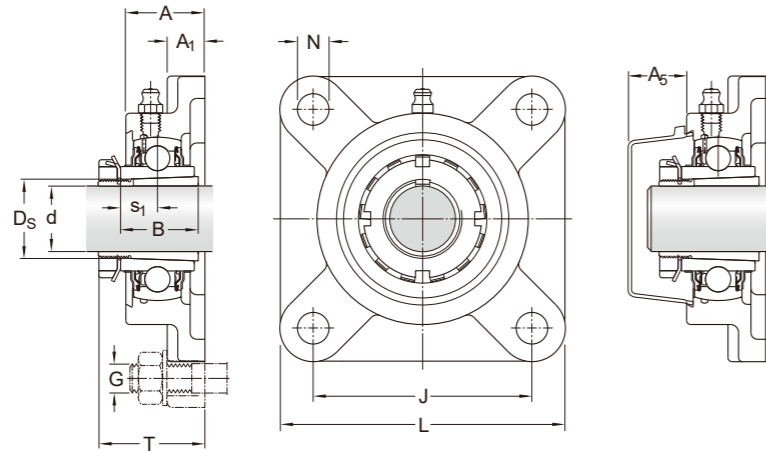
## 2.10 Pillow block ball bearing units, adapter locking d 20 – 80 mm



Designations		Dimensions											
Ball bearing unit	Adapter sleeve	Dimensions											
		d	A	A <sub>1</sub>	B	H	H <sub>2</sub>	L	N	N <sub>1</sub>	G	S <sub>1</sub>	
-		mm									-	mm	
UKP205K	H2305	20	38.1	22.6	24	70.64	15.89	139.7	18	13	10	12	
UKP206K	H2306	25	44.6	24	28	83.34	16.67	165.1	21	17	14	14	
UKP207K	H2307	30	45.8	28.2	30.5	93.66	18.26	166.69	21	17	14	15.25	
UKP208K	H2308	35	48.8	30	33.9	101	20.64	184.15	21	17	14	16.95	
UKP209K	H2309	40	51.2	31	35	107.95	19.05	189.71	21	17	14	17.5	
UKP210K	H2310	45	55.6	31.8	37	115.89	19.05	206.38	22	20	16	18.5	
UKP211K	H2311	50	58.9	36.3	40	126.21	22.23	219.08	22	20	16	20	
UKP212K	H2312	55	61.6	35.2	42.5	141.29	22.23	239.71	25	20	16	21.25	
UKP213K	H2313	60	71.9	34.9	43.5	153.59	25.4	265.11	30	25	20	21.75	
UKP215K	H2315	65	73	42	47.8	164	25.4	271.47	30	25	20	23.9	
UKP216K	H2316	70	77.8	45.2	45.6	176.21	32.7	292.1	35	25	20	22.8	
UKP217K	H2317	75	83.2	47.6	52.4	188.91	34.7	310.36	35	25	20	26.2	
UKP218K	H2318	80	88	50.8	57.8	202.41	36.7	327.03	40	27	22	28.9	

Designations		Principal dimensions			Basic load ratings		Fatigue load limit	Limiting speed with shaft tolerance h6	Mass
Ball bearing unit	Adapter sleeve	Principal dimensions			dynamic	static			
		D <sub>s</sub>	H <sub>1</sub>	J	C	C <sub>0</sub>	P <sub>u</sub>	r/min	kg
-		mm			kN				
UKP205K	H2305	25	36.5	105	14.07	7.84	0.34	5950	0.72
UKP206K	H2306	30	42.9	121	19.60	11.26	0.48	5100	1.12
UKP207K	H2307	35	47.6	127	25.63	15.38	0.66	4400	1.42
UKP208K	H2308	40	49.2	137	30.85	19.10	0.80	3850	1.87
UKP209K	H2309	45	54	146	33.37	21.71	0.92	3500	2.1
UKP210K	H2310	50	57.2	159	35.28	23.32	0.98	3400	2.53
UKP211K	H2311	55	63.5	171	43.82	29.15	1.26	3100	3.32
UKP212K	H2312	60	69.8	184	52.96	36.18	1.54	2800	4.2
UKP213K	H2313	65	76.2	203	57.49	40.20	1.71	2450	5.85
UKP215K	H2315	75	82.6	217	66.63	49.25	2.05	2100	6.7
UKP216K	H2316	80	88.9	232	73.16	53.27	2.17	1850	8.45
UKP217K	H2317	85.08	95.2	247	83.62	64.32	2.51	1700	10.6
UKP218K	H2318	90.08	101.6	262	96.08	72.36	2.71	1600	12.9

## 2.11 Square flanged ball bearing units, adapter locking d 20 – 80 mm

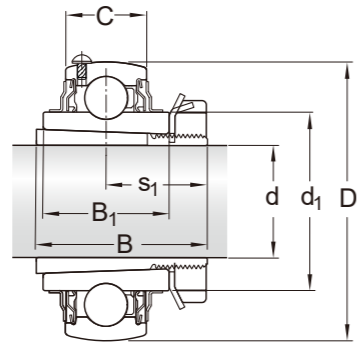


Designations			Dimensions									
Ball bearing unit	Adapter sleeve	Associated end cover										
			d	A	A <sub>1</sub>	A <sub>5</sub>	B	L	N	G	S <sub>1</sub>	T
-			mm									
UKF205K	H2305	ECY205	20	26.9	12.7	20.5	24	95	12	10	12	28
UKF206K	H2306	ECY206	25	30	14.3	22.5	28	108	12	10	14	32
UKF207K	H2307	ECY207	30	32	15.1	24.5	30.5	117.5	14	12	15.25	34.25
UKF208K	H2308	ECY208	35	35.5	15.1	26	33.9	130.2	16	14	16.95	37.95
UKF209K	H2309	ECY209	40	38.1	15.9	26.5	35	136.5	16	14	17.5	39.5
UKF210K	H2310	ECY210	45	39.7	15.9	33	37	142.9	16	14	18.5	40.5
UKF211K	H2311	ECY211	50	42.9	18.3	37.5	40	161.9	19	16	20	45
UKF212K	H2312	ECY212	55	47.6	18.3	39	42.5	174.6	19	16	21.25	50.25
UKF213K	H2313	ECY213	60	50	22.2	39	43.5	187.3	19	16	21.75	51.75
UKF215K	H2315	ECY215	65	56.4	22.2	-	47.8	200	19	16	23.9	57.9
UKF216K	H2316	ECY216	70	57.9	22.2	-	45.6	207.9	23	20	22.8	56.8
UKF217K	H2317	ECY217	75	62.7	23.8	-	52.4	219.9	23	20	26.2	62.2
UKF218K	H2318	ECY218	80	68.3	25.4	-	57.8	234.9	23	20	28.9	68.9

Designations			Principal dimensions		Basic load ratings		Fatigue load limit	Limiting speed with shaft tolerance h6	Mass
Ball bearing unit	Adapter sleeve	Associated end cover			dynamic	static			
			D <sub>s</sub>	J	C	C <sub>0</sub>	P <sub>u</sub>	r/min	kg
-			mm		kN				
UKF205K	H2305	ECY205	25	70	14.07	7.84	0.34	5950	0.67
UKF206K	H2306	ECY206	30	83	19.60	11.26	0.48	5100	1
UKF207K	H2307	ECY207	35	92	25.63	15.38	0.66	4400	1.27
UKF208K	H2308	ECY208	40	102	30.85	19.10	0.80	3850	1.67
UKF209K	H2309	ECY209	45	105	33.37	21.71	0.92	3500	1.95
UKF210K	H2310	ECY210	50	111	35.28	23.32	0.98	3400	2.23
UKF211K	H2311	ECY211	55	130	43.82	29.15	1.26	3100	3.17
UKF212K	H2312	ECY212	60	143	52.96	36.18	1.54	2800	3.7
UKF213K	H2313	ECY213	65	149	57.49	40.20	1.71	2450	4.9
UKF215K	H2315	ECY215	75	159	66.63	49.25	2.05	2100	5.65
UKF216K	H2316	ECY216	80	165	73.16	53.27	2.17	1850	6.35
UKF217K	H2317	ECY217	85.08	175	83.62	64.32	2.51	1700	8.45
UKF218K	H2318	ECY218	90.08	187	96.08	72.36	2.71	1600	10.3



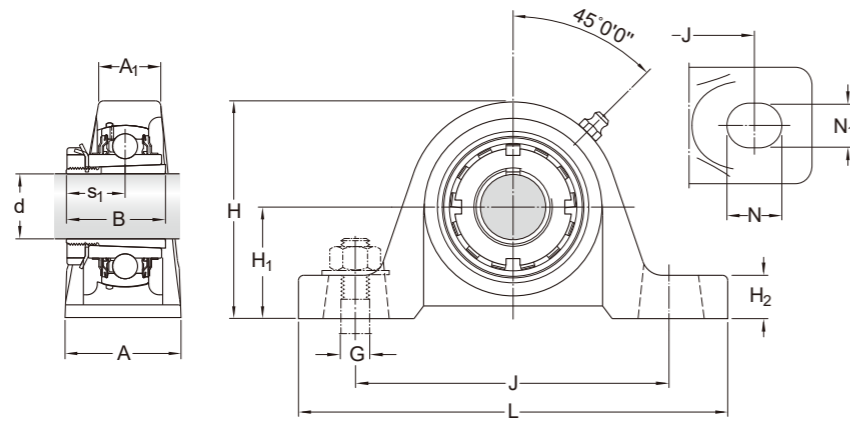
## 2.12 Insert bearings with set screws, metric shafts d 20 – 80 mm



Designations	Dimensions						
	d	D	B <sub>1</sub>	B	C	d <sub>1</sub>	s <sub>1</sub>
-	mm						
UK205/AH	20	52	24	35	15	33.74	20.5
UK206/AH	25	62	28	38	18	39.7	22.5
UK207/AH	30	72	30.5	43	19	46.1	24.8
UK208/AH	35	80	33.9	46	21	51.8	27.5
UK209/AH	40	85	35	50	22	56.8	29
UK210/AH	45	90	37	55	22	62.51	31.1
UK211/AH	50	100	40	59	25	69.06	32.5
UK212/AH	55	110	42.5	62	26	75.64	33.8
UK213/AH	60	120	43.5	65	27	82.5	35.3
UK215/AH	65	130	47.8	73	29	92.05	38.4
UK216/AH	70	140	45.6	78	30	97.4	41.8
UK217/AH	75	150	52.4	82	34	106.05	44
UK218/AH	80	160	57.8	86	36	112.5	46.65

Designations	Basic load ratings		Fatigue load limit	Limiting speed with shaft tolerance h6	Mass
	dynamic	static			
-	C	C <sub>0</sub>	P <sub>u</sub>	r/min	kg
-	kN				
UK205/AH	14.07	7.84	0.34	5950	0.25
UK206/AH	19.60	11.26	0.48	5100	0.38
UK207/AH	25.63	15.38	0.66	4400	0.54
UK208/AH	30.85	19.10	0.80	3850	0.71
UK209/AH	35.38	21.71	0.92	3500	0.84
UK210/AH	35.28	23.32	0.98	3400	0.97
UK211/AH	43.82	29.15	1.26	3100	1.25
UK212/AH	42.91	36.18	1.54	2800	1.55
UK213/AH	57.49	40.20	1.71	2450	1.9
UK215/AH	66.33	49.25	2.01	2100	2.65
UK216/AH	73.37	53.27	2.17	1850	3.1
UK217/AH	83.42	64.32	2.51	1700	3.95
UK218/AH	96.48	72.36	2.71	1600	4.7

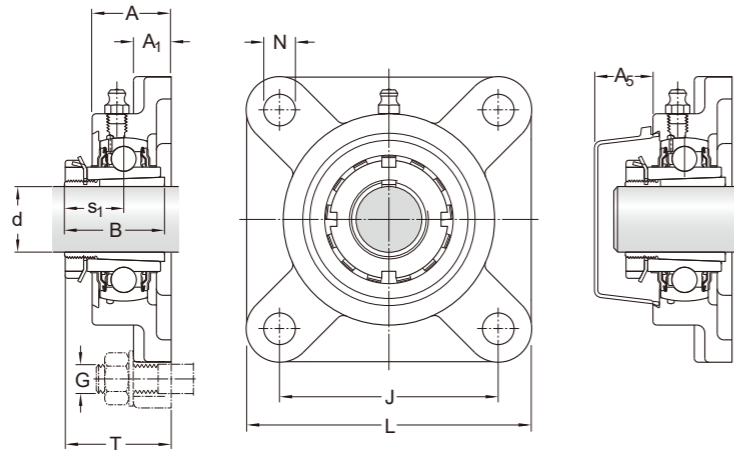
## 2.13 Pillow block ball bearing units, adapter locking d 20 – 80 mm



Designations		Dimensions										
Ball bearing unit	Adapter sleeve	Dimensions										
		d	A	A <sub>1</sub>	B	H	H <sub>2</sub>	L	N	N <sub>1</sub>	G	S <sub>1</sub>
-		mm										
UKP205/AH	H2305	20	38.1	22.6	35	70.64	15.89	139.7	18	13	10	20.5
UKP206/AH	H2306	25	44.6	24	38	83.34	16.67	165.1	21	17	14	22.5
UKP207/AH	H2307	30	45.8	28.2	43	93.66	18.26	166.69	21	17	14	24.75
UKP208/AH	H2308	35	48.8	30	46	101	20.64	184.15	21	17	14	27.45
UKP209/AH	H2309	40	51.2	31	50	107.95	19.05	189.71	21	17	14	29
UKP210/AH	H2310	45	55.6	31.8	55	115.89	19.05	206.38	22	20	16	31.1
UKP211/AH	H2311	50	58.9	36.3	59	126.21	22.23	219.08	22	20	16	32.5
UKP212/AH	H2312	55	61.6	35.2	62	141.29	22.23	239.71	25	20	16	33.75
UKP213/AH	H2313	60	71.9	34.9	65	153.59	25.4	265.11	30	25	20	35.25
UKP215/AH	H2315	65	73	42	73	164	25.4	271.47	30	25	20	38.4
UKP216/AH	H2316	70	77.8	45.2	78	176.21	32.7	292.1	35	25	20	41.8
UKP217/AH	H2317	75	83.2	47.6	82	188.91	34.7	310.36	35	25	20	43.95
UKP218/AH	H2318	80	88	50.8	86	202.41	36.7	327.03	40	27	22	46.65

Designations		Principal dimensions		Basic load ratings		Fatigue load limit	Limiting speed with shaft tolerance h6	Mass
Ball bearing unit	Adapter sleeve	H <sub>2</sub>	J	dynamic	static			
				C	C <sub>0</sub>	P <sub>u</sub>		
-		mm		kN		r/min	kg	
UKP205/AH	H2305	36.5	105	14	7.8	0.335	5850	0.82
UKP206/AH	H2306	42.9	121	19.5	11.2	0.475	5000	1.25
UKP207/AH	H2307	47.6	127	25.5	15.3	0.655	4300	1.6
UKP208/AH	H2308	49.2	137	30.7	19	0.8	3750	2.1
UKP209/AH	H2309	54	146	33.2	21.6	0.915	3400	2.4
UKP210/AH	H2310	57.2	159	35.1	23.2	0.98	3300	2.9
UKP211/AH	H2311	63.5	171	43.6	29	1.25	3000	3.75
UKP212/AH	H2312	69.8	184	52.7	36	1.53	2700	4.7
UKP213/AH	H2313	76.2	203	57.2	40	1.7	2350	6.4
UKP215/AH	H2315	82.6	217	66.3	49	2.04	2000	7.75
UKP216/AH	H2316	88.9	232	72.8	53	2.16	1750	9.55
UKP217/AH	H2317	95.2	247	83.2	64	2.5	1600	11.9
UKP218/AH	H2318	101.6	262	95.6	72	2.7	1500	14.3

## 2.14 Square flanged ball bearing units, adapter locking d 20 – 80 mm



Designations			Dimensions									
Ball bearing unit	Adapter sleeve	Associated end cover										
			d	A	A <sub>1</sub>	A <sub>5</sub>	B	L	N	G	S <sub>1</sub>	T
-			mm									
UKF205/AH	H2305	ECY205	20	26.9	12.7	20.5	35	95.3	12	10	20.5	28
UKF206/AH	H2306	ECY206	25	30	14.3	22.5	38	108	12	10	22.5	32
UKF207/AH	H2307	ECY207	30	32	15.1	24.5	43	117.5	14	12	24.75	43.75
UKF208/AH	H2308	ECY208	35	35.7	15.1	26	46	130.2	16	14	27.45	48.45
UKF209/AH	H2309	ECY209	40	38.1	15.9	26.5	50	136.5	16	14	29	51
UKF210/AH	H2310	ECY210	45	39.7	15.9	33	55	142.9	16	14	31.1	53.1
UKF211/AH	H2311	ECY211	50	42.9	18.3	37.5	59	161.9	19	16	32.5	57.5
UKF212/AH	H2312	ECY212	55	47.6	18.3	39	62	174.6	19	16	33.75	62.75
UKF213/AH	H2313	ECY213	60	50	22.2	39	65	187.3	19	16	35.25	65.25
UKF215/AH	H2315	ECY215	65	56.4	22.2	-	73	200	19	16	38.4	72.4
UKF216/AH	H2316	ECY216	70	57.9	22.2	-	78	207.9	23	20	41.8	75.8
UKF217/AH	H2317	ECY217	75	62.7	23.8	-	82	219.9	23	20	43.95	79.95
UKF218/AH	H2318	ECY218	80	68.3	25.4	-	86	234.9	23	20	46.65	86.65

Designations			Principal dimensions	Basic load ratings		Fatigue load limit	Limiting speed with shaft tolerance h6	Mass
Ball bearing unit	Adapter sleeve	Associated end cover		dynamic	static			
			J	C	C <sub>0</sub>	P <sub>u</sub>	r/min	kg
-			mm	kN				
UKF205/AH	H2305	ECY205	70	14.07	7.84	0.34	5950	0.77
UKF206/AH	H2306	ECY206	83	19.60	11.26	0.48	5100	1.15
UKF207/AH	H2307	ECY207	92	25.63	15.38	0.66	4400	1.45
UKF208/AH	H2308	ECY208	102	30.85	19.10	0.80	3850	1.9
UKF209/AH	H2309	ECY209	105	33.37	21.71	0.92	3500	2.25
UKF210/AH	H2310	ECY210	111	35.28	23.32	0.98	3400	2.6
UKF211/AH	H2311	ECY211	130	43.82	29.15	1.26	3100	3.6
UKF212/AH	H2312	ECY212	143	52.96	36.18	1.54	2800	4.2
UKF213/AH	H2313	ECY213	149	57.49	40.20	1.71	2450	5.45
UKF215/AH	H2315	ECY215	159	66.63	49.25	2.05	2100	6.65
UKF216/AH	H2316	ECY216	165	73.16	53.27	2.17	1850	7.65
UKF217/AH	H2317	ECY217	175	83.62	64.32	2.51	1700	9.95
UKF218/AH	H2318	ECY218	187	96.08	72.36	2.71	1600	12